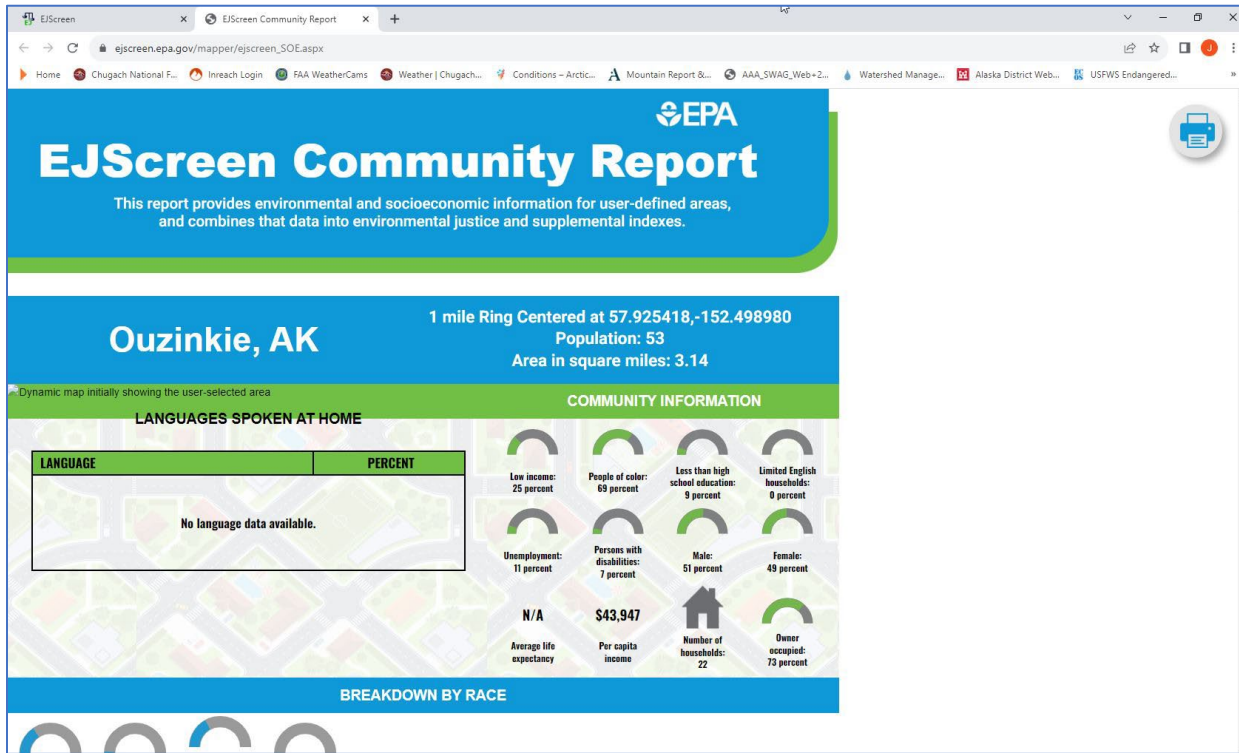


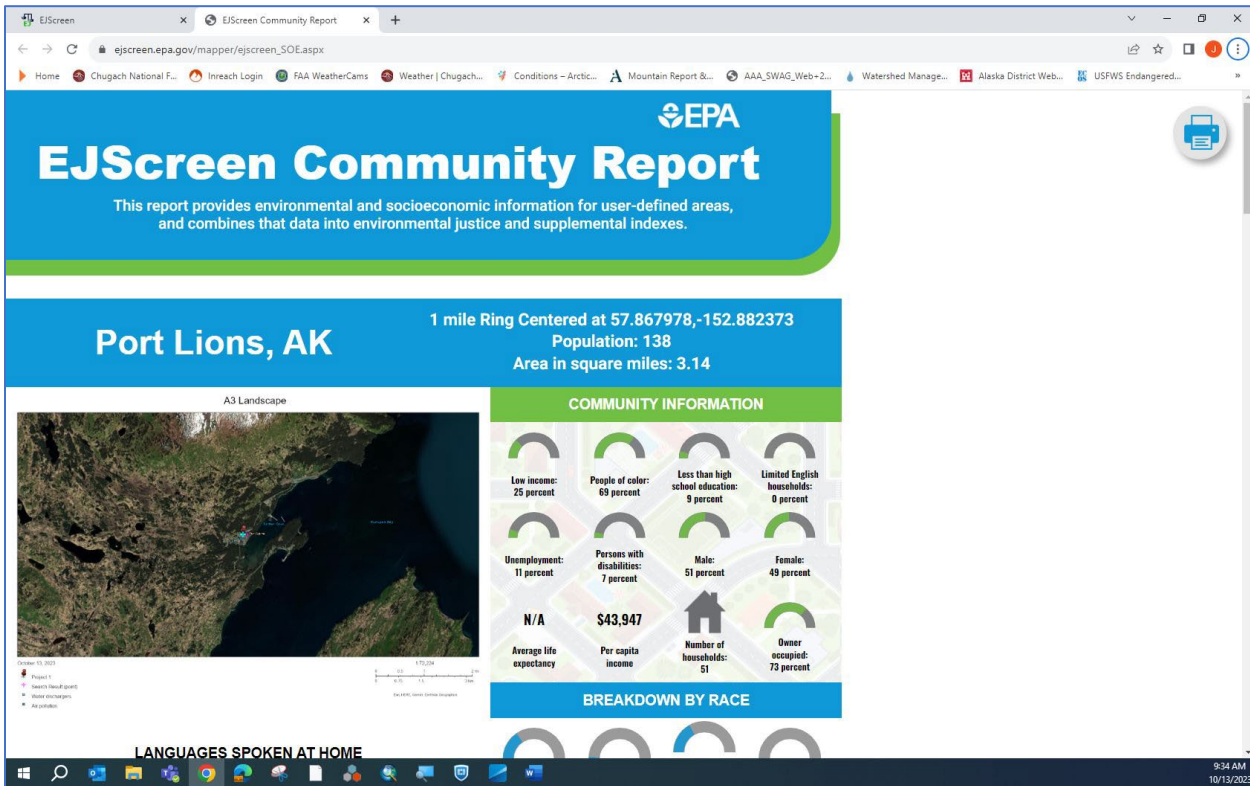
APPENDIX H

U.S. Environmental Protection Agency Environmental Justice Mapper

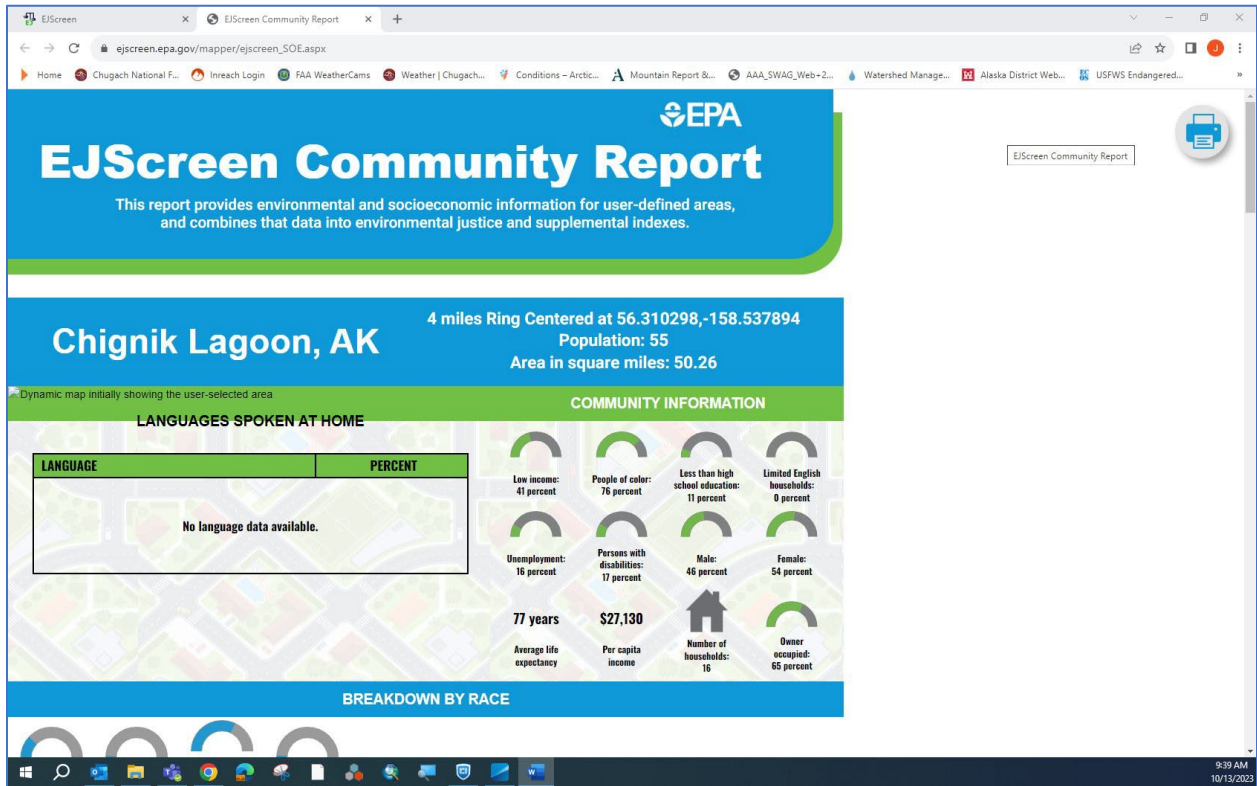
OUZINKIE



PORT LIONS



CHIGNIK LAGOON



CHIGNIK LAKE



COLD BAY

EPA
EJScreen Community Report
This report provides environmental and socioeconomic information for user-defined areas, and combines that data into environmental justice and supplemental indexes.

Cold Bay, AK
5 miles Ring Centered at 55.205125,-162.718775
Population: 22
Area in square miles: 78.53

Dynamic map initially showing the user-selected area

LANGUAGES SPOKEN AT HOME

LANGUAGE	PERCENT
No language data available.	

COMMUNITY INFORMATION

- Low income: 35 percent
- People of color: 86 percent
- Less than high school education: 18 percent
- Limited English households: 0 percent
- Unemployment: 1 percent
- Persons with disabilities: 25 percent
- Male: 65 percent
- Female: 35 percent
- Average life expectancy: 87 years
- Per capita income: \$37,979
- Number of households: 58
- Owner occupied: 35 percent

BREAKDOWN BY RACE

9:53 AM
10/13/2023

FALSE PASS

EPA
EJScreen Community Report
This report provides environmental and socioeconomic information for user-defined areas, and combines that data into environmental justice and supplemental indexes.

False Pass, AK
5 miles Ring Centered at 54.853869,-163.411125
Population: 177
Area in square miles: 78.53

A3 Landscape

COMMUNITY INFORMATION

- Low income: 35 percent
- People of color: 86 percent
- Less than high school education: 18 percent
- Limited English households: 0 percent
- Unemployment: 1 percent
- Persons with disabilities: 25 percent
- Male: 65 percent
- Female: 35 percent
- Average life expectancy: 87 years
- Per capita income: \$37,979
- Number of households: 27
- Owner occupied: 35 percent

BREAKDOWN BY RACE

LANGUAGES SPOKEN AT HOME

9:56 AM
10/13/2023