



# Sample Project Descriptions and Maps for BEAD Environmental and Historic Preservation (EHP) Review

*This document is intended solely to assist recipients in better understanding the Broadband Equity, Access, and Deployment (BEAD) Program and the requirements set forth in the Infrastructure Investment and Jobs Act, Notice of Funding Opportunity (NOFO), as modified by the BEAD Restructuring Policy Notice (RPN). This document does not and is not intended to supersede, modify, or otherwise alter applicable statutory or regulatory requirements, the terms and conditions of the award, or the specific application requirements set forth in the NOFO not modified by the RPN. In all cases, statutory and regulatory mandates, the terms and conditions of the award, and follow-on policies and guidance, shall prevail over any inconsistencies contained in this document.*



The background features a dark blue field with a decorative graphic of five concentric, light blue arcs. These arcs are positioned on the left side of the page, curving towards the right. The arcs are of uniform thickness and are spaced evenly, creating a sense of depth and movement.

# **Project Descriptions**

# Project Description Overview

Environmental Screening and Permitting Tracking Tool (ESAPTT) **Grants Project Records** must contain both summary and detailed project descriptions and maps to support NEPA approval.

- The **Project Description Summary** (text box) will be incorporated into the NEPA decision memo. If bulk uploaded from the Final Proposal, it may require revision.
- **Project Map** and **Project Description** file uploads will be reviewed for NTIA NEPA approval.






Follow the guidance and templates below to ensure the adequacy of these key elements.

## »» PROJECT DESCRIPTION SUMMARY

The **ESAPTT Project Description Summary** should describe, in 1,000 characters or less, the infrastructure elements and activities subject to environmental review, including the number of locations (BSLs and CAIs) being served, the technology type, the deployment method including distance of construction and/or deployment activities (i.e., how long is the fiber "route," how many poles are being added and/or replaced) and relevant contextual information. Data bulk uploaded from BEAD Final Proposals may be manually edited to provide sufficient summary information for the NEPA memo.

## DETAILED PROJECT DESCRIPTION

The detailed project description uploaded to ESAPTT must clearly describe:

-  **The BEAD Project ID and NEPA Project ID**
-  **What will be constructed** (e.g., a 150' monopole communication tower)
-  **Where work will occur** by address (e.g., 123 Main Street) or extent of project limits (e.g., the route the project will follow with access roads and staging areas used)
-  **The site and surrounding area** (e.g., developed land vs. open space; adjacent natural resources, such as rivers, wetlands, or forests; and any protected lands), with **maps and photographs** as appropriate
-  **How the project will be implemented** including the extent of construction, such as area and depth of ground disturbance or estimated number of utility poles involved (e.g., installation of a concrete pad, an equipment shed, and an emergency generator with a 400-gallon above-ground fuel storage tank requiring 1-acre of disturbance at approximately 5 feet depth )

# Sample Project Descriptions | Page 1 of 2

## **Sample ESAPTT Project Description Summary (Buried Fiber)**

Installation of 58 miles of buried fiber optic cable in a previously disturbed, existing road right-of-way along Route 42 from Dalton to Marysville to serve 35 residences in Whitefield and Murray Counties, Example State.

## **Sample ESAPTT Project Description Summary (Tower Project)**

Construction of two monopole and two lattice communication towers to serve 240 residences between Willows City and Copper City, in New County, Example State.

## **Sample Detailed Project Description (Buried Fiber)**

The Marysville Fiber Optic Network (BEAD Project ID: CM22-BEAD-OH-871-209, NEPA Project ID: CM22-BEAD-OH-871-209-N2) would install 58 miles of buried fiber optic cable in a previously disturbed, existing road right-of-way along Route 42 from Dalton to Marysville in Whitefield and Murray Counties, Example State. The project would install new conduit for the cable using primarily a vibratory plow; ground disturbance from plowing is estimated to be 6” wide and up to 36” deep, with the trench being immediately filled in and covered. Handholes, level with the ground and measuring approximately 17” x 30” x 36”, would be installed every 5 miles. For the Marysville River crossing, the conduit would be mounted to the underside of the Marysville Bridge, a historic bridge originally constructed in 1927.

There are 2 drainage culverts along the proposed route, for which directional boring would be used to go underneath the culverts. The proposed route is in a previously disturbed area within the road shoulder, surrounded by woods and open fields from mile 19 to mile 37. The beginning and end of the proposed route are within developed areas with residential and commercial development on either side of the road shoulder.

There are no federal, state, or local public lands or protected/restricted uses within the proposed route. The Marysville River crossing would not require any activities to occur on or in the water.

# Sample Project Descriptions | Page 2 of 2

## Sample Detailed Project Description (Tower Project)

The NewConnect project (BEAD Project ID: CM58-BEAD-CA-555-827, NEPA Project ID: CM58-BEAD-CA-555-827-N7) would construct 4 communication towers between Willows City and Copper City, in New County, Example State. Each tower would be a self-supporting structure, with two monopoles at 95' and 120' tall, and two lattice structures at 190' and 210' tall, with the latter including required safety marking and lighting. The two monopole tower sites (Towers 1 and 2) would be newly constructed within a 20'x20' compound and would contain equipment sheds and 1,000 gallon above-ground diesel fuel storage tanks. The two lattice structure tower sites (Towers 3 and 4) are proposed in the vicinity of existing communications sites within the Mendocino National Forest. Depth of ground disturbance for each tower will vary but will not be greater than 20" in any location. Site design is being finalized and once the total estimate ground disturbance is known but is estimated at less than two acres total. There are no other protected lands in the proposed project area. The non-forest service tower sites are proposed in areas characterized by agriculture uses and open space. Tower site locations are provided below.

<b>Tower</b>	<b>Location</b>	<b>Type</b>
Tower 1 – Willows City	39°31'27.0"N 122°16'38.4"W	Monopole, 95'
Tower 2 – Elm Creek	39°36'45.2"N 122°31'48.2"W	Monopole, 120'
Tower 3 – Elder Springs	39°40'45.5"N 122°42'30.1"W	Lattice, 190'
Tower 4 – Copper City	39°43'02.9"N 122°48'47.5"W	Lattice, 210'

The image features a dark blue background with a decorative graphic of five concentric, light blue arcs. The arcs are centered on the left side and curve towards the right, creating a sense of depth and movement. The text "Project Map" is centered within the innermost arc.

# Project Map

# Project Map Overview

To unlock the Environmental Screening for a Grant Project in the Environmental Screening and Permitting Tracking Tool (ESAPTT) Eligible Entities must upload a project map that provides significant context on the surrounding environment of the NEPA project area. This should include, at a minimum, a project overview map that sufficiently displays the NEPA project area, as outlined below.

Additional maps (i.e. wetlands, hazardous resources, etc.) may be required to upload the Extraordinary Circumstances section of the Environmental Screening. These supplemental maps can be provided as additional pages in the initial map upload file.

See the [ESAPTT User Guide](#) for additional details on map format, naming conventions, and size limits. NTIA recommends that files are submitted as a flattened PDF to preserve layer information and visibility.



## PROJECT MAP

---

The project map overview uploaded to ESAPTT must:



**Be appropriately scaled to display the entire NEPA project area**, as submitted to NTIA in the Final Proposal, and **demonstrate where in the BEAD Project Area and the NEPA Project Area lie**. Include the BEAD Project ID and NEPA Project ID as labeled elements in the project map



Display **surrounding topography and environment in the NEPA Project Area** to provide context of project area (i.e. web-based GIS image, aerial photo, geographic or topographic map)



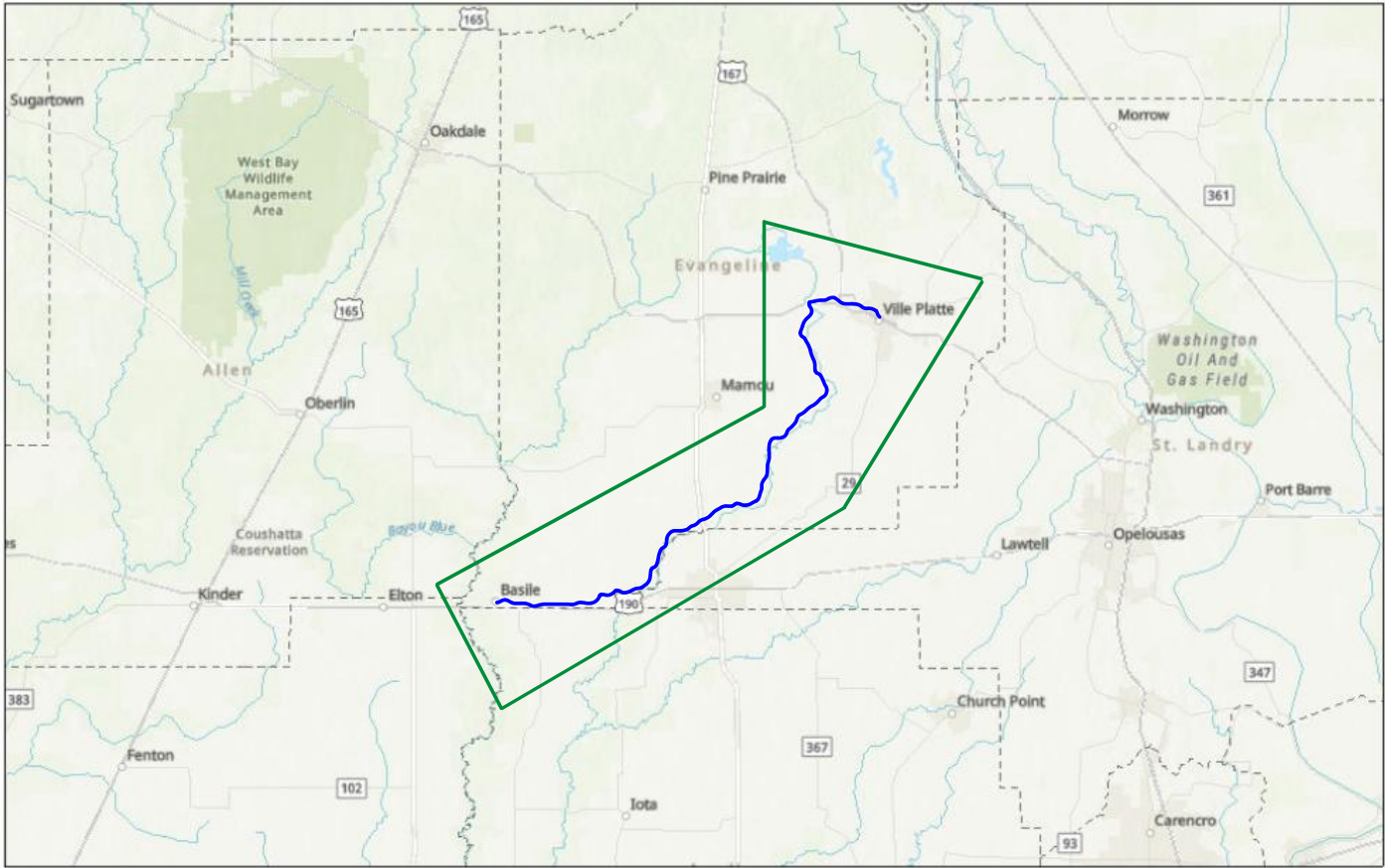
**Illustrate all routes, locations, and footprints of federally-funded project infrastructure** (e.g., *fixed wireless project maps must show the limit and extent of all ground disturbance, not just Broadband Serviceable Locations served.*)





**Contain a key that clearly labels** technology types, existing versus new infrastructure, and other important data points shown in the map

# Sample Project Map

## EXAMPLE PROJECT DEPLOYMENT MAP

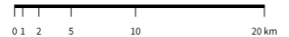
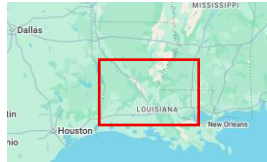


**Alignment**  
 Basile to Ville Platte (Vibratory Plow)

**Key**  
 NEPA Project Area Boundary  
 County Borders

**BEAD Project ID**  
 CM##-BEAD-LA-###-###

**NEPA ID**  
 CM##-BEAD-LA-###-###-#



Sources: Esri, TomTom, Garmin, FAO, NOAA, USGS, OpenStreetMap contributors, and the GIS User Community, Esri, CGIAR, USGS

**Note:** This map was created to provide an example. This is not associated with a proposed BEAD project or the sample project description provided in this guide